

Cricut Explore Air 2 Bluetooth Setup: Easy Steps for Connection

Are you here to learn about the [Cricut Explore Air 2 Bluetooth setup](#)? If so, you are in the right place. Connecting Cricut to your compatible device and completing the machine setup can be daunting. So, here is what you need to do: join me on my journey, and let me teach you how to setup Cricut in the best way possible.

I am a Cricut expert who has worked on multiple projects and used all the Cricut models. Since I have worked on all these machines, I am also familiar with how to use them and how to set them up quickly.

Let's delve into this guide and learn how to set it up step-by-step. This blog will be helpful for Windows users, so make sure you have this device. Let's get started now!

Step 1: Checking System Compatibility

Before you learn about the [Cricut Explore Air 2 Bluetooth setup](#), you must know about your system and confirm whether it is compatible with your Cricut. Below, I have mentioned the system requirements for Windows PC users. Take a look at it:

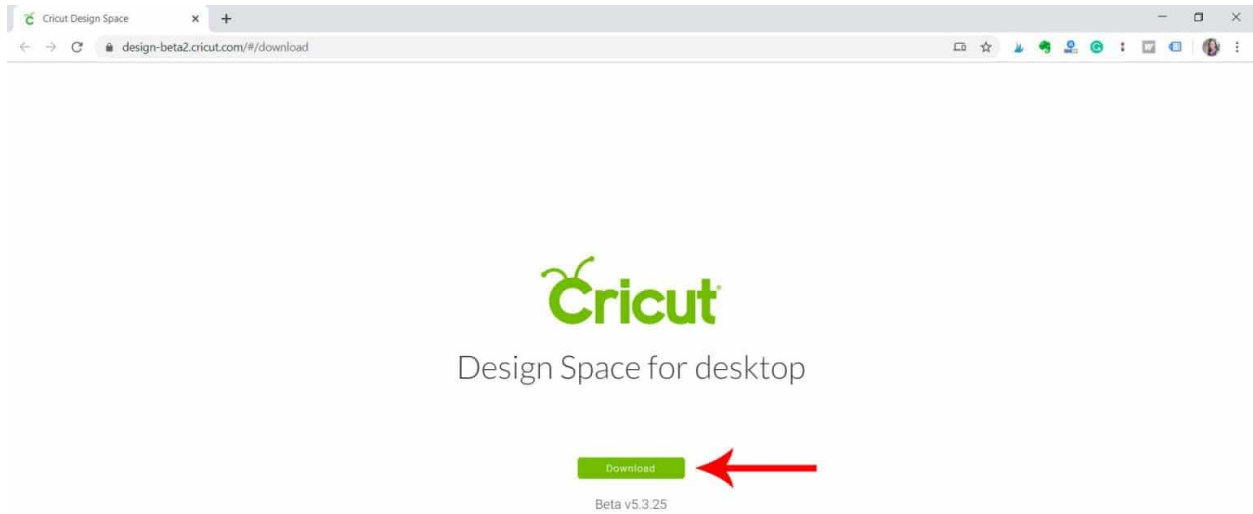
- Windows 10 or later operating system is needed
- CPU should have Intel Dual-Core or equivalent AMD processor
- 4 GB of RAM is enough
- 2 GB of free disk space
- Available USB port and Bluetooth connection
- The minimum screen resolution requirement is 1024 x 768 px

Now that you know what you need on your PC, you need to start downloading the Cricut Design Space app.

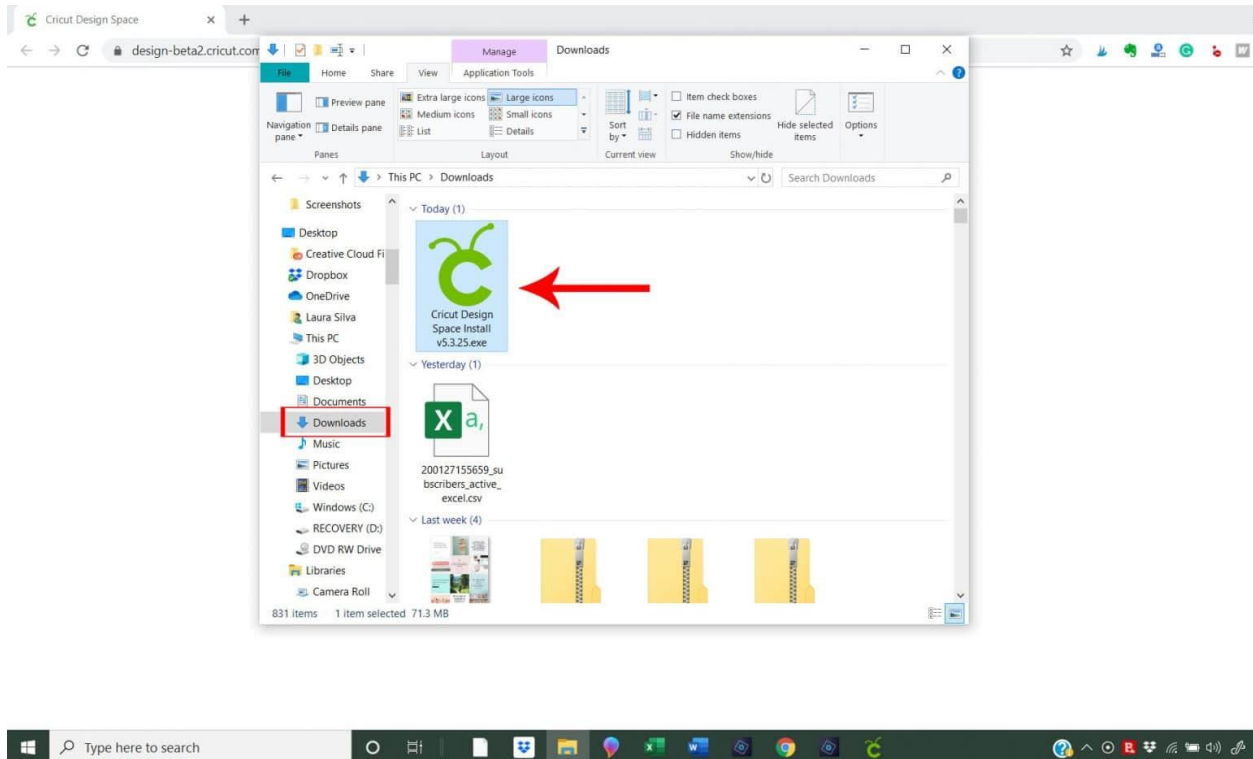
Step 2: Download Cricut Design Space App

Here, I have explained how to download the Cricut software on a Windows computer. Follow the steps described below carefully:

1. I launched the browser on my PC and navigated to **design.cricut.com** to get started.
2. When I reached the website, I clicked on the checkbox to agree to **Cricut's Terms of Use and Privacy Policy**.
3. After that, I switched the **Download** tab to start downloading.



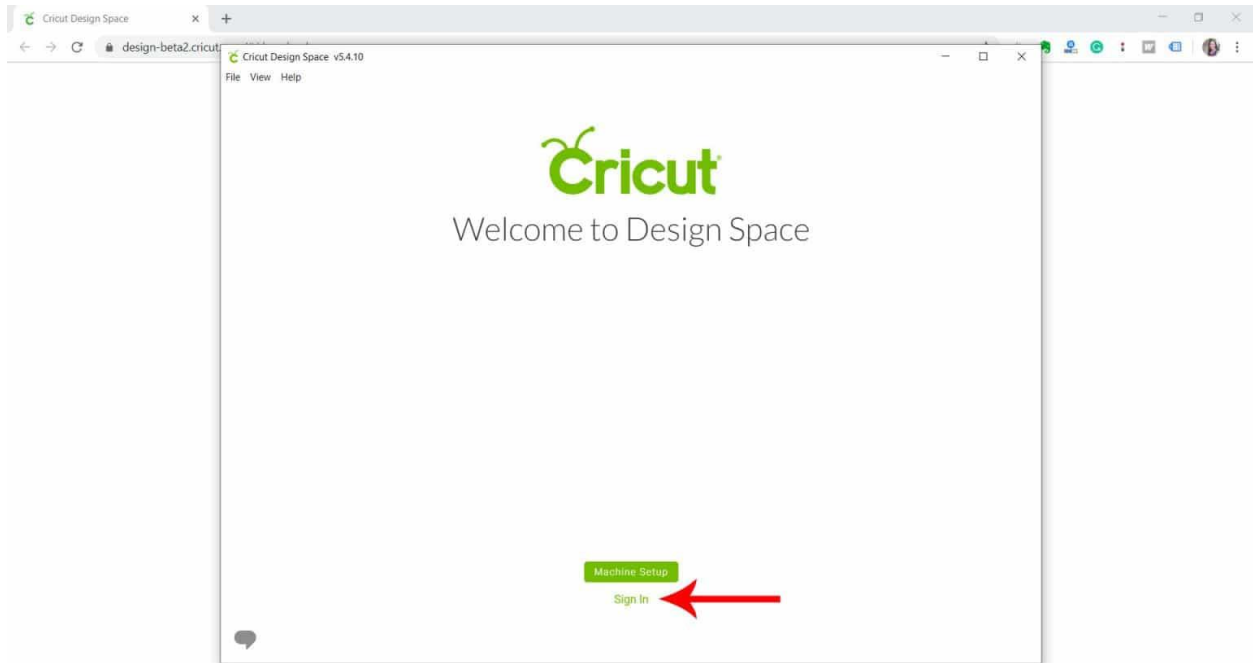
4. After downloading the app, double-click the downloaded file in my **Downloads** folder.



5. You will be asked whether you should trust the application. You have to select the option to trust the app.

6. On the following screen, your installation will start.

7. If you have a Cricut ID, you need to sign in to your account using your username and password.



Step 3: Cricut Explore Air 2 Bluetooth Setup

Finally, it is time to learn **how to setup Cricut Explore Air 2**. Below are the simple steps I described. Find them and follow the steps described below:

1. Go to the search bar on the taskbar and click on the Windows logo icon.
2. Then, type **Cricut Design Space** and hit the **Enter** key on your keyboard to launch the app.
3. Once the app is open, you will have to select the option **Product Setup**.
4. After that, you will need to create a Cricut ID.
5. Now, you will see the next screen where you have to choose the option **Smart Cutting Machine**.

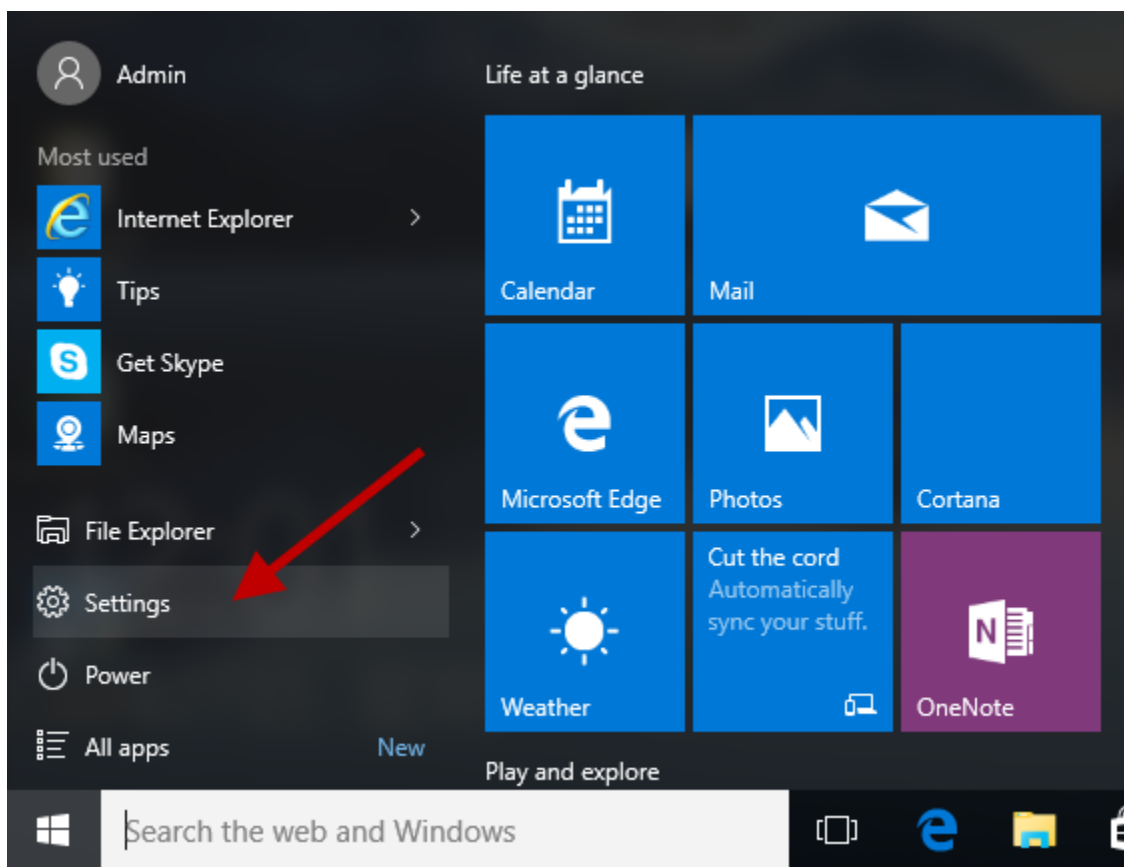


6. In the next step, choose your machine model.
7. Finally, you need to follow the rest of the steps.

Step 4: Connect Cricut Machine to Your PC via Bluetooth

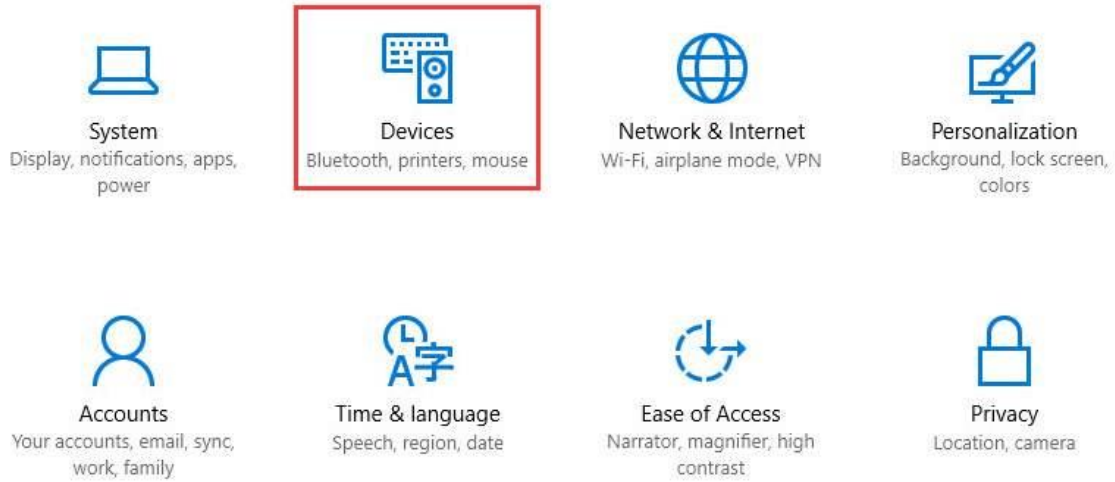
When it comes to connecting your Cricut cutting machine to your computer, you have to keep a few points in mind, such as distance, proper placement on a flat surface, and so on. I have mentioned the required steps below; ensure you follow the steps carefully to accomplish the **Cricut Explore Air 2 Bluetooth setup**.

1. Keep your Cricut and computer at a distance of 10 to 15 feet from each other.
2. Then, go to your **Settings** and then choose the **Devices** option.

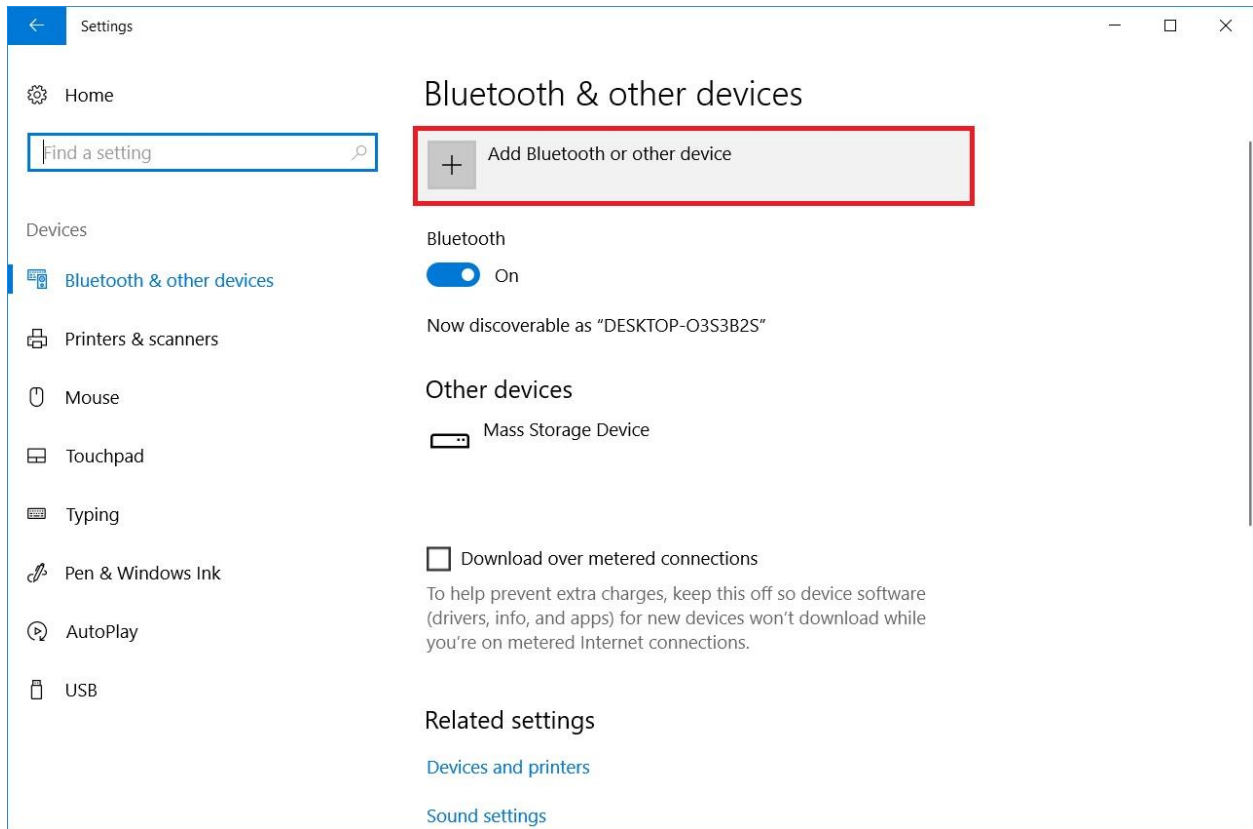


Windows Settings

Find a setting



3. After that, you must turn on your Bluetooth and add the Cricut machine.
4. To add your Cricut model to your PC, click on **Add Bluetooth or other device**.



5. After that, you must select **Bluetooth** and hold on for a while.
6. Later, your Cricut machine will appear on the available list, so select it to pair.

FAQs

Question 1: How to setup my Cricut Explore Air 2 on my Mac?

Answer: If you want to setup your Cricut cutting machine on your MacBook, then you need to follow the steps described below:

1. Check your system requirements for your Mac.
2. Next, connect all the power cables to your wall outlet.
3. After that, download the Cricut Design app on Mac.
4. Open the software on Mac and click on **Product Setup**.
5. Then, create your Cricut ID and select **Smart Cutting Machine**.
6. Now, select your machine and connect it to your Mac using USB or Bluetooth.

Question 2: What do I need for setting up my Cricut Explore Air 2?

Answer: In order to setup my Cricut Explore machine, you will need some essential items. Find these items mentioned below:

- Cricut Explore Air 2
- LightGrip cutting mat
- USB cable or Bluetooth built-in device
- Cricut account
- Internet connection
- Compatible computer & mobile device
- Cricut Design Space software

Question 3: Why can't my Cricut Explore Air 2 stay connected to Bluetooth?

Answer: If you are experiencing these issues repeatedly and they can't be fixed easily, you will need to check the distance between your Cricut and your device. Make sure you do not exceed the distance of 15 feet. The range between 10 to 15 feet is suitable and perfect.

Final Words

This guide will help you master the [Cricut Explore Air 2 Bluetooth setup](#) quickly and easily. I have explained everything stepwise. From checking system compatibility to connecting the Cricut machine to your Windows PC, you will find each step simple and easy to understand. This is a Bluetooth setup because the connection that we have established is done by Bluetooth.

Visit here to know More: [Cricut Easy Press](#)

[Pinterest](#)