

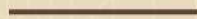


GAURIPADA KALYAN-WEST, 

ABOUT THE GROUP

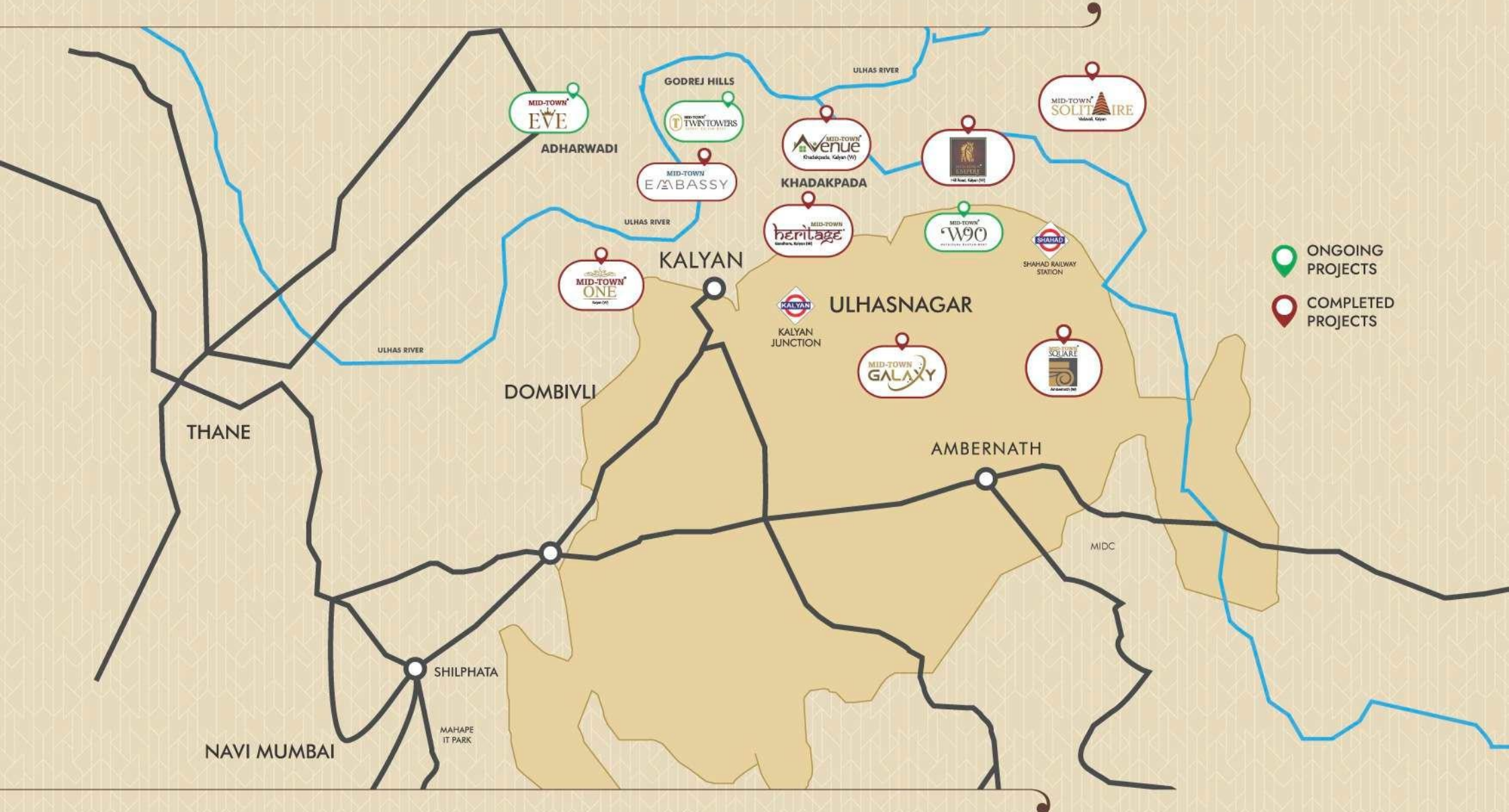


We began our journey in 2010 and with the patronage of our customers & channel partners, we delivered 5 Residential & 3 Commercial projects successfully in Kalyan, Ulhasnagar & Ambernath.



MID-TOWN[®]
G R O U P
Setting New Standards

LEGACY MAP



-  ONGOING PROJECTS
-  COMPLETED PROJECTS

A WEST FACING PROJECT
WITH ABUNDANCE OF VAYU



THE GOD OF
WIND







OUR LOCATION



Situated at a strategic location in GauriPada with convenient access to schools, hospitals, shopping area and railway stations makes it comfortable for every member in the family.

REACH ANYWHERE AS SWIFT AS THE WIND



-  Shahad Railway Station - 1.4 Km
Kalyan Railway Station - 2.9 Km
-  BK Birla School - 1.7 Km
Brighton World School - 300 Mtrs
BK Birla College - 1.3 Km
-  Samarth Hospital - 850 Mtr
Holy Cross Hospital - 2.2 Km
Ayush Multispeciality Hospital - 2.8 Km
-  DMart, Godrej Hill - 2.4 Km
Smartpoint - 2.3 Km
Croma - 3.3 Km
-  PVR Cineplex, Spring Avenue - 2.3 Km

	Lake		Temple & Fort
	Roads		Railway Station

LOCATION MAP

PRESENTING





AN ADDRESS THAT IS MEANT TO
SET NEW STANDARDS OF LIVING IN

KALYAN

MID-TOWN[®]

W90

GAURIPADA KALYAN - WEST







**EXCLUSIVE FEATURES
THAT TAKE THE PROJECT
TO A HIGHER LEAGUE**





**LOCATED 60 FEET
AWAY FROM THE
MAIN ROAD THAT
GIVES A DISTINCT LOOK**



**A SOARING
30 STOREY WEST FACING
BUILDING SPREAD
ON A VAST AREA**





**A BEAUTIFUL
COMBINATION OF
RESIDENTIAL, COMMERCIAL
& LEISURE**



**LAYOUT OF
90 DEGREES GIVES
IT AN ABUNDANCE OF
WIND & SUNLIGHT**





**ROMAN GOTHIC
ARCHITECTURE
& ROYAL INTERIOR**



**HIGH CEILINGS
AND WALLS ADD
TO THE GRANDEUR**

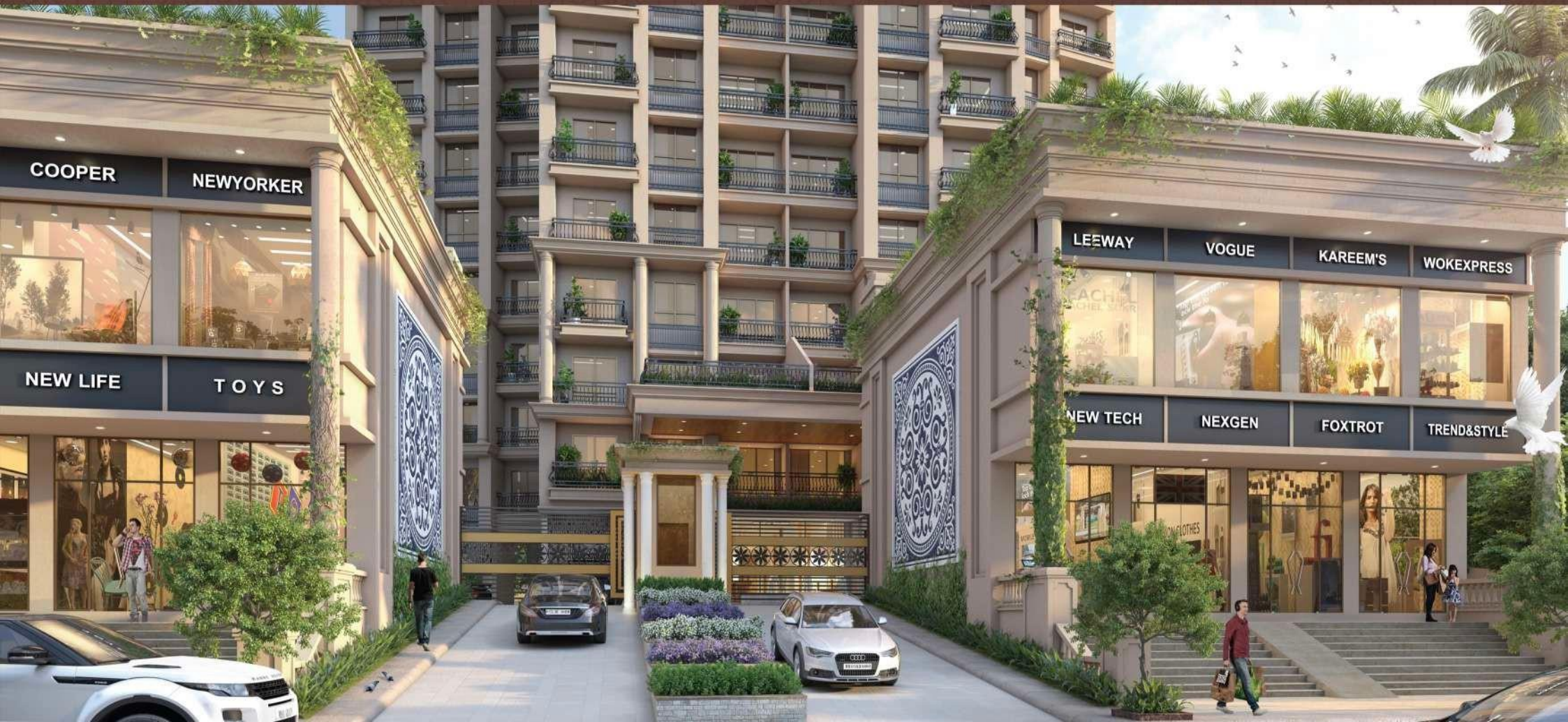


THE WIND BENEATH THE WINGS; OUR RETAIL ARENA



A bustling retail arena close to your home makes your life more convenient and also provides a landmark status to the location.

Brand Outlets, Showrooms, Cafes and more...





**TRIM YOUR SAILS TO
THE WINDS OF
WORLD-CLASS LIVING**



A LUXURIOUS DRIVEWAY



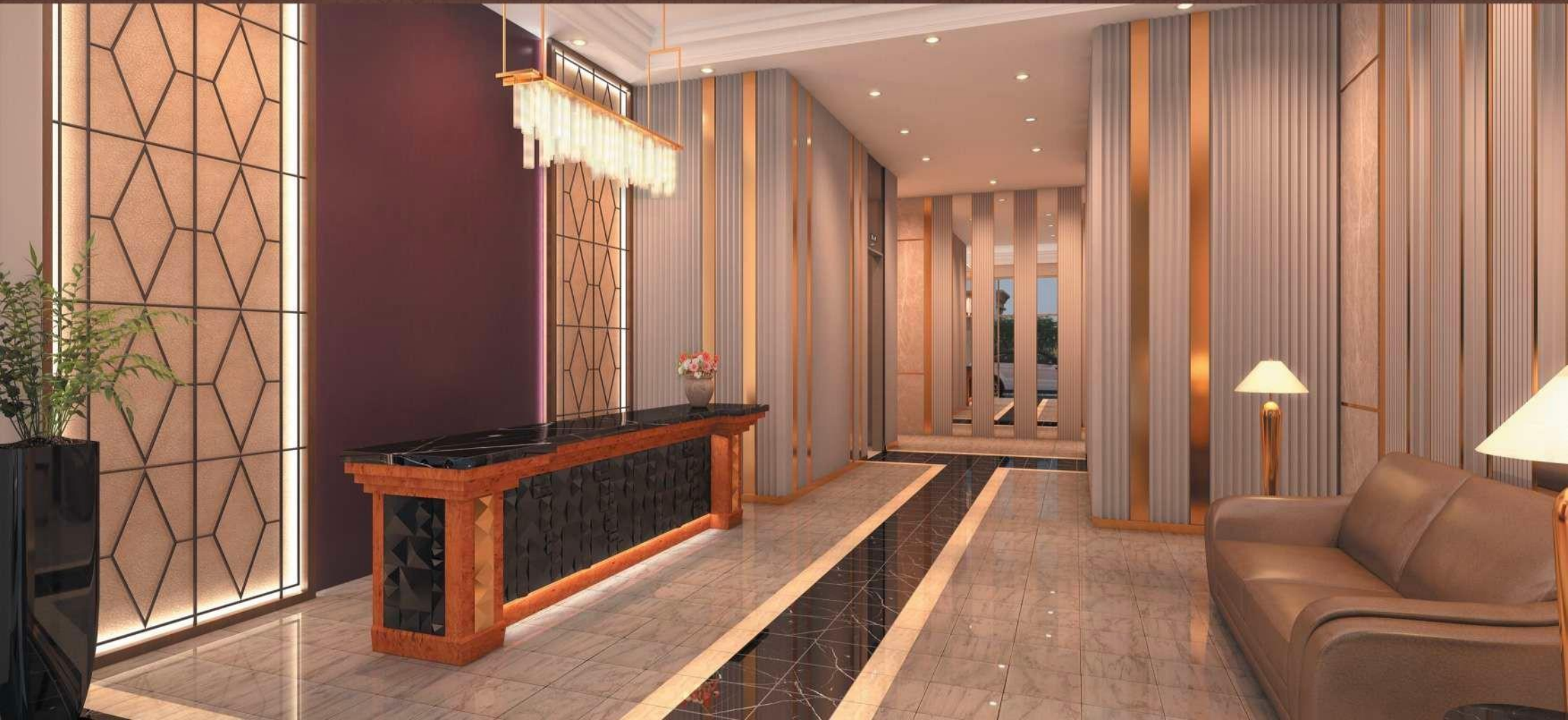
Luxury greets you as soon as you arrive in
MID-TOWN W90



MAGNIFICENT PORCH THAT WELCOMES YOU



The luxurious entrance lobby and huge porch is enough to impress you and call this your home.





**LARGEST
2 & 3 BHK
HOMES WITH DECKS
IN THE VICINITY**



Only 4 apartments
on each floor.

CROSS VENTILATION IN EVERY APARTMENT



The direction and the lay out of the project is such that every apartment is fully cross ventilated. This makes sure that there is always a natural air flow, resulting in reduced heat and pollution.

CONVENIENT GARBAGE CHUTE



Garbage Chute which
is hassle-free &
extremely hygienic.





CHECK OUT OUR SITE PLAN



12 M WIDE ROAD



**DEDICATED
15TH FLOOR FOR
RECREATION**



We have reserved an
entire floor for fun and
recreational activities.

RECREATIONAL FLOOR

Music / Activity Zone

Mini Theater

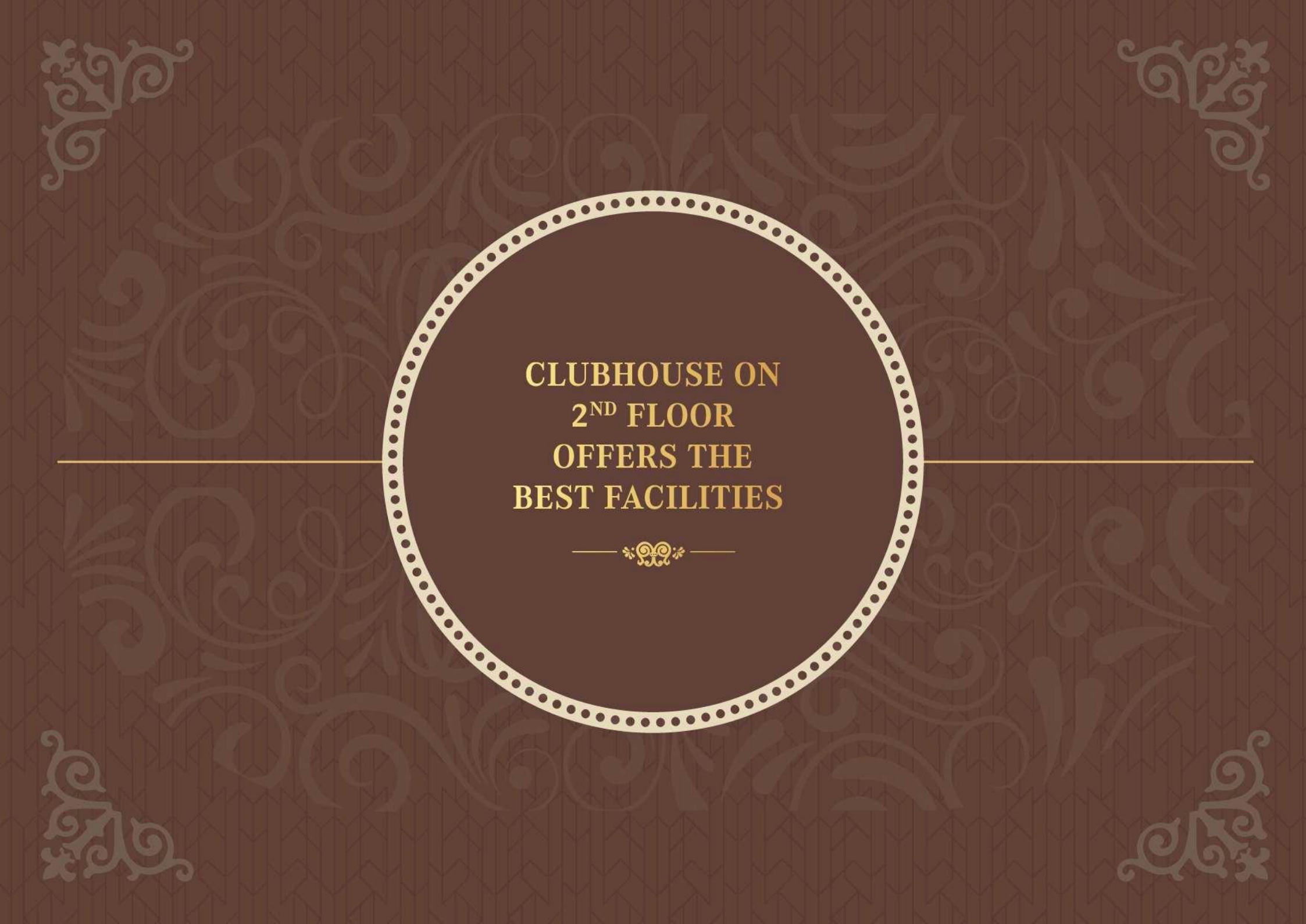
Library

Multipurpose Hall

Indoor Games

Waiting Area





**CLUBHOUSE ON
2ND FLOOR
OFFERS THE
BEST FACILITIES**



CLUBHOUSE



1 Meditation area with green space



2 Swimming pool & toddlers pool with sitting arena



3 State-of-the-art gymnasium



4 Steam rooms



5 Play area for children



6 Multipurpose turf court outdoor games





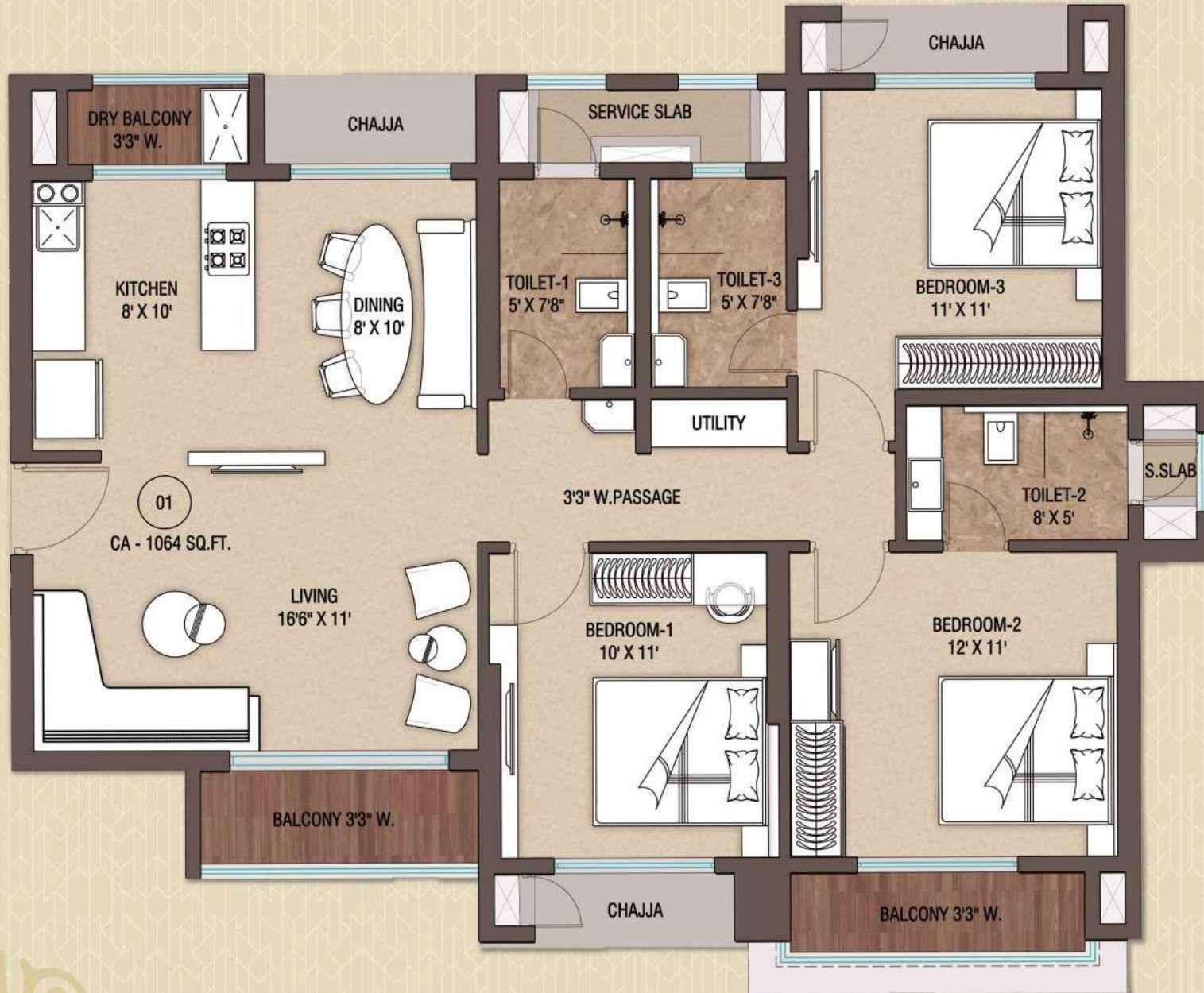
TYPICAL FLOOR PLAN



2 BHK UNIT PLAN



3 BHK UNIT PLAN





MID-TOWN[®]
G R O U P
Setting New Standards

COME BE A PART OF THE
BEST PROJECT IN KALYAN



MID-TOWN[®]
W90

GAURIPADA KALYAN-WEST



—  —

Thank
You

—  —