

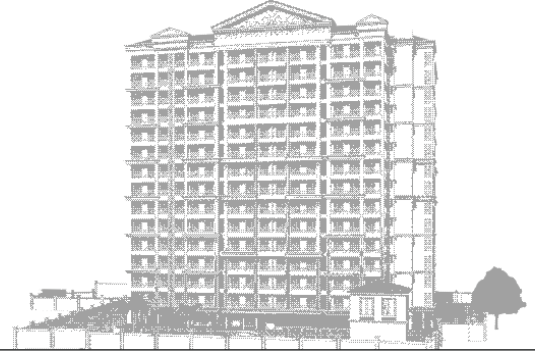


NARAYANI DHAM

**MAYA**

“Mera Apna Yaadgaar Aashiyaana”

## OUR PRESENCE IN VICINITY



**TOTAL DEVELOPMENT 10.40 LAKHS SQ. FT.**

## COMPLETED / READY TO MOVE IN PROJECTS

### Om Sai Home

Location : Temghar  
Development Area : 2.50 Lakhs  
Total Units : 406 Units  
Possession : Hand Over & December 2023

### Gyan Ganga Apartment

Location : Bhadwad  
Development Area : 42 Thousand  
Total Units : 68 Units  
Possession : March 2023

## ON GOING PROJECTS IN AFFORDABLE SEGMENT

### Shambhu Shankar Residency

Location : Bhadwad  
Development Area : 1.50 Lakhs  
Total Units : 272 Units  
Possession : December 2024

### Shiv Sai Awas

Location : Bhadwad  
Development Area : 1.78 Lakhs  
Total Units : 316 Units  
Possession : March 2024







### Shivaalik Park

Location : Bhadwad  
Development Area : 4.20 Lakhs  
Total Units : 794 Units  
Possession : June 2023



# LOCATION MAP



-  National Highway
-  Road
-  Metro 5 Line
-  Metro Station
-  Railway Station
-  Bridge

-  Bank
-  Healthcare
-  School
-  College
-  Food & Shopping
-  PVR

## Disclaimer

1. This route map is for indicative purpose only and is subject to change by MMRDA.
2. This route map is not to scale source google map.
3. This route map is for internal use only.
4. All pictures, icons & layout shown are for illustration purpose only.

# INFRA DEVELOPMENT IN BHIWANDI

Work In Progress Metro Line 5



Mumbai Nashik Samruddhi Mahamarg



8 Lane Highway (Work in Progress)

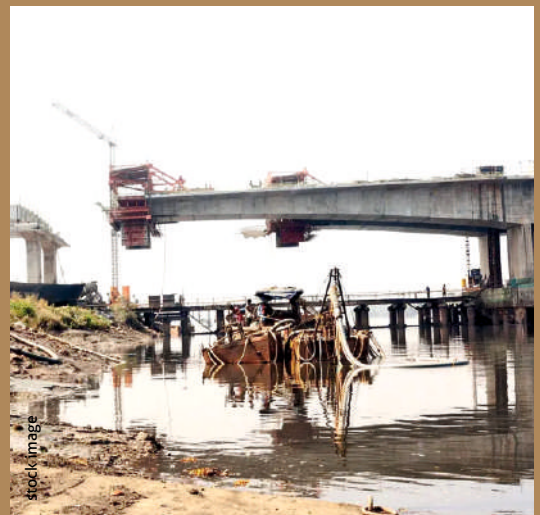
Thane - Virar Railway Work In Progress



Ready Durgadi Bridge



Dombivali Mankoli Bridge (Under Construction)







## Connectivity

- Mumbai - Nashik Expressway - 7 Min (8 Lane Samruddhi Mahamarg)
- Upcoming Metro Station - 5 Min
- Bhiwandi Station - 10 Min
- Thane - 30 Min, Mumbai Airport - 60 Min
- Kalyan Station - 20 Min
- 200 Feet Ring Road - 2 Min
- Virar Alibaug Multimodal Corridor - 10 Min



## Schools

- Presidency School
- Podar International
- All Saint School
- Holy Marry Convent
- Scholars School
- Gurukul School
- Polymath School
- Leo Kids Pre School



## Colleges

- Swayam Siddhi College Management & Research
- B.N.N. College
- N.E.S. JR College
- Birla College
- Chougule College
- Oswal School & College



## Healthcare

- Ved Hospital - 10 Min
- Life-Line Hospital - 10 Min
- Fortis Hospital - 15 Min
- Holy Cross Hospital - 15 Min
- Jupiter Hospital - 30 Min
- Dhangre Hospital - 10 Min
- Heal Life Hospital - 10 Min
- Prime Hospital - 10 Min



## Entertainment, Food & Shopping

- Dominos
- Mc-Donald's
- Prashant Corner
- Teen Batti Markets
- Jio Mart Supermarket
- Reliance Digital
- Zudio
- Vijay Sales
- My D-mall
- The Miracle Mall
- PVR
- Korum Mall
- Metro Junction Mall
- Viviana Mall
- Sports Stadium
- Durgadi Fort
- Lake



# BHIWANDI GROWING UP AROUND YOU

# 35+ LIFE STYLE



**24x7 CCTV Security**



**Branded Elevator**



**Ample Car Parking Space**



**Bike Parking**



**GYM**



**Library**



**Community Hall**



**Bonfire Area**



**Club House**



**Fitness And Recreation Areas**



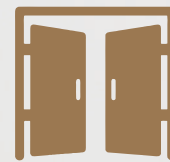
**Children Play Zone**



**Pharmacy**



**Indoor Games**



**Grand Entrance Lobby**



**Retail Plaza**



# LE AMENITIES



**Gazebo**



**Cricket Practice Pitch**



**Landscape Garden**



**Power Backup Common Areas**



**Shopping Mall**



**Yoga Deck**



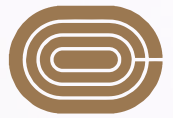
**Multi Purpose Hall**



**Senior Citizen Area**



**Super Market**



**Jogging Track**



**Temple**



**Organic Plantation**



**Seating Lounge**



**Common Toilet Area**



**Intercom Facility**



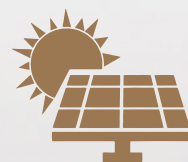
**ATM**



**Sky Meditation Pavilion**



**Rainwater Harvesting**



**Solar Water Connection**



**Gated Community**



# PROJECT LAYOUT ELEVATION



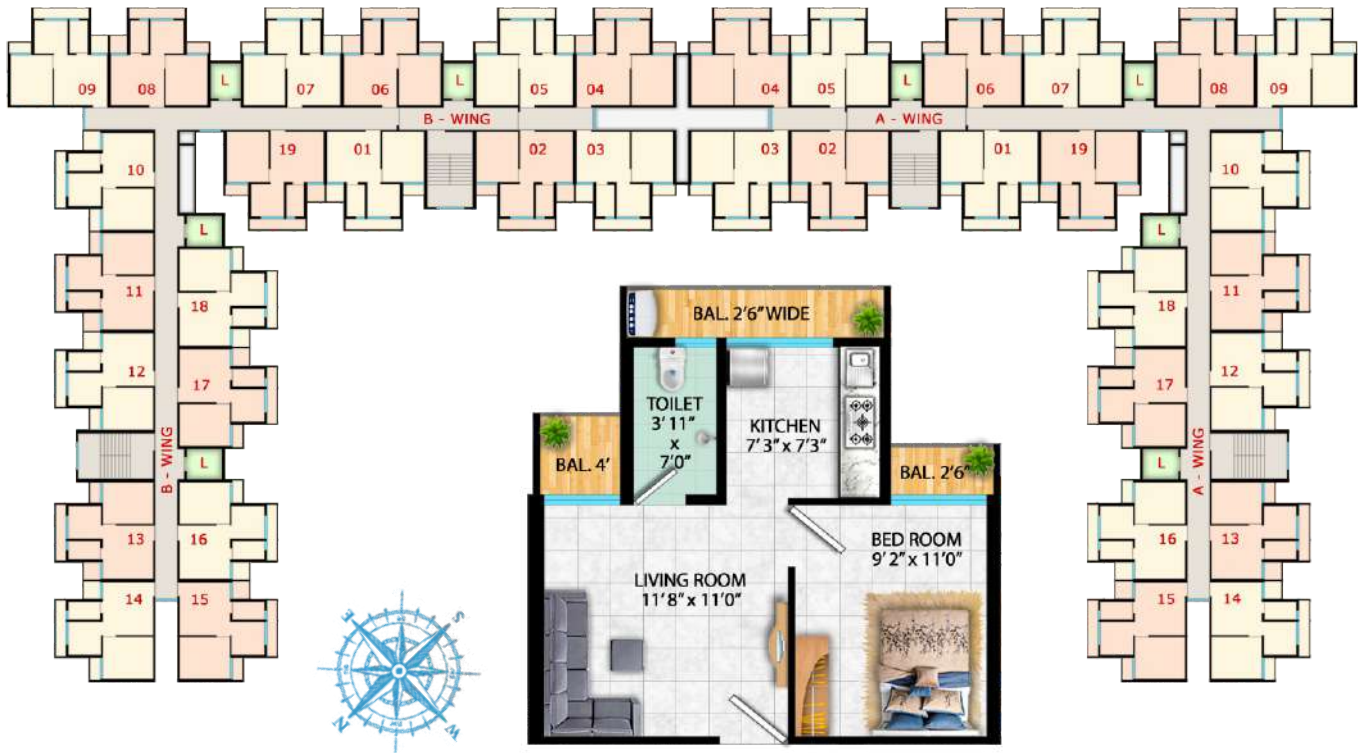
## PMAY TOWER - 2





# FLOOR PLAN A-WING & B-WING

2<sup>nd</sup> to 8<sup>th</sup>, 10<sup>th</sup> to 13<sup>th</sup>, 15<sup>th</sup> to 18<sup>th</sup> & 20<sup>th</sup> to 23<sup>rd</sup>



## UNIT PLAN 1 BHK with Balcony



USABLE CARPET (SQ. FT.)

**376**

RERA CARPET (SQ. FT.)

**323**



# PROJECT LAYOUT ELEVATION

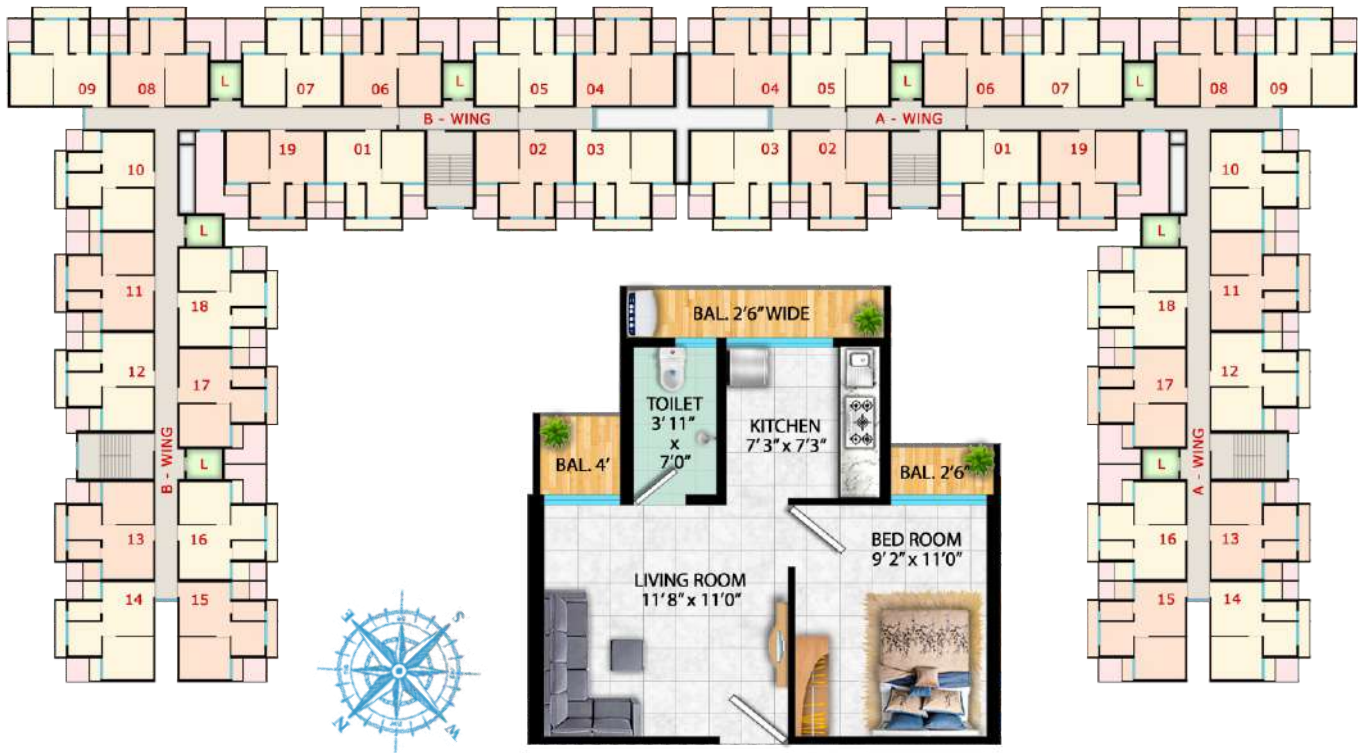


# PMAY CLUB HOUSE





# 1<sup>st</sup> FLOOR PLAN A-WING & B-WING



# PROJECT ELEVATION NIGHT VIEW







Add : Survey No. 4, Sales Office, Narayani Dham,  
Opp Chhatrapati Shivaji Maharaj Cricket Stadium,  
Bhadwad - Sonale Road, Bhadwad, Bhiwandi - 421 302.

Email : [mayadeveloper23@gmail.com](mailto:mayadeveloper23@gmail.com)  
Web : [www.vidishaconstructions.com](http://www.vidishaconstructions.com)  
Call : 93711 03801

 RERA Disclaimer

The project has been registered via Maha RERA registration number- P51700017958, P51700017889, P51700017817 & is available on the website <https://maharera.mahaonline.gov.in> under Registered projects Disclaimer: The images and other details herein are only indicative. The Promoter reserves the right to change any or all of these in the interest of the development, as per provision of law. Artist's impressions are used to illustrate amenities specifications, images, and other details. Tolerance of +/- 3% is possible in the unit areas on account of design and construction variances. All brands stated are subject to final decision of the project architect. This electronic / printed material does not constitute an offer and/or contract of any type between the Promoter and the recipient. No booking or allotment shall be deemed to have been made on the basis of this electronic / printed material. Any Purchaser / Lessee of this development shall be governed by the terms and conditions of the agreement for sale / lease entered into between the parties, and no details mentioned in this electronic / printed material shall in any way govern such transactions unless as may be otherwise expressly provided in the agreement for sale/ lease by the Promoter. The Promoter does not warrant or assume any liability or responsibility for the accuracy or completeness of any information contained herein. This electronic/printed material has been created keeping in mind the provisions of the Real Estate (Regulation and Development) Act, 2016 (RERA) applicable for projects in Maharashtra. You are required to verify all the details, including area, amenities, services, terms of sales and payments and other relevant terms independently with the Promoter's sales team only, by physically visiting the project site and the authorized website of RERA. You are requested NOT to visit any unauthorized or unverified website/broker (online/offline) to receive any information about any projects of the Promoter and/or Its sister concerns. "Terms & Conditions Apply.