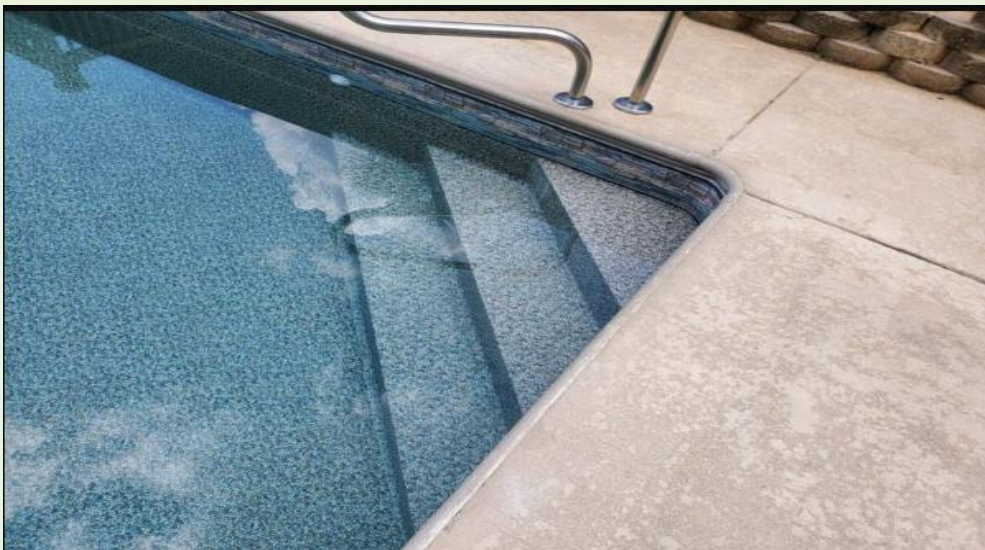


Seamless Transitions: The Beauty of Well-Designed Pool Coping

When creating the perfect oasis in your backyard, the devil is in the details. One often overlooked but crucial aspect is swimming pool coping. The right coping not only adds aesthetic appeal but also serves practical functions. In this blog post, we will delve into the art of seamless transitions, exploring the beauty that well-designed pool coping can bring to your aquatic haven.



The Aesthetic Dance of Form and Function

Well-designed swimming pool coping is the unsung hero of pool aesthetics. It's not merely a border but a visual transition that ties together your pool design with the surrounding landscape. The options are as diverse as your imagination, from classic to contemporary styles.

Imagine a sleek, modern pool seamlessly transitioning into a chic patio space with carefully chosen coping materials. Whether it's the clean lines of straight-edge coping or the rustic charm of natural stone, the right choice can elevate your pool area from ordinary to extraordinary. This integration of form and function ensures that your pool becomes a harmonious part of your overall outdoor design.

In the realm of aesthetics, [Swimming Pool Coping](#) is the brushstroke that completes the canvas, providing a finishing touch that brings your vision to life. From travertine to concrete,

each material adds its unique texture and colour palette, transforming your poolside into a personalized masterpiece.

Practical Brilliance - The Functional Role of Coping

Beyond its visual appeal, swimming pool coping serves a vital practical purpose. Acting as a barrier between the pool structure and the decking, it prevents water from seeping into the foundation and causing damage. This not only safeguards the structural integrity of your pool but also ensures longevity and durability.



Moreover, coping provides a non-slip surface, enhancing safety for swimmers entering and exiting the pool. Its slightly raised edge helps to contain splashing, minimizing the risk of accidents. A well-designed coping not only looks good but contributes to the overall safety and usability of your pool.

As you embark on selecting the perfect swimming pool coping, consider its aesthetic charm and functional brilliance. The synergy of these elements creates a seamless transition that enhances both the visual and practical aspects of your aquatic escape.

Conclusion:

In the world of pool design, every detail matters, and swimming pool coping is the detail that bridges the gap between style and substance. Whether you prefer the timeless appeal of classic materials or the contemporary allure of modern designs, the right coping can transform your pool into a work of art.

For more information, visit our website: <https://avatarscapes.com/>