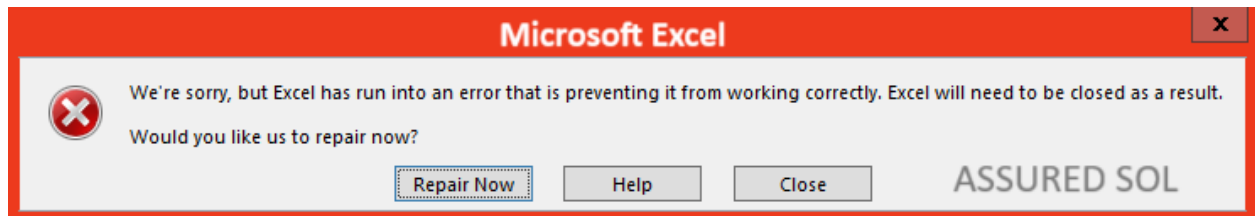


Resolving Excel Error Message” Excel has run into an error”



Microsoft Excel is a powerful tool widely used for data analysis, calculations, and organization. However, users may encounter error messages that disrupt their workflow. One common message is “Excel has run into an error.” Here are some troubleshooting tips to help you overcome this issue:

Why this Error Message ” Excel has run into an Error ” appears?

The error message “Excel has run into an error” can have various causes. It might be due to issues with the Excel application itself, problems with the document you’re working on, or issues with your computer’s resources. Try restarting Excel, checking for software updates, and ensuring your system meets Excel’s requirements. If the [problem](#) persists, consider repairing or reinstalling Excel, and make sure your file isn’t corrupted.

Solutions to fix Steps for this Error Message “Excel has run into an Error “

By the following troubleshooting steps to fix the [excel error message](#) in application. Follow the steps very carefully to get rid of this error message

Check for Updates:

Ensure that your Excel software is up-to-date. Microsoft regularly releases updates that include bug fixes and improvements. Updating to the latest version may resolve compatibility issues causing the error.

Add-ins Management:

Disable any recently installed Excel add-ins. Some third-party add-ins may conflict with Excel operations, leading to errors.

Go to the Excel Options menu, select Add-ins, and disable suspicious or unnecessary add-ins.

File Corruption:

A corrupt Excel file can trigger errors. Attempt to open other Excel files to determine if the issue is specific to one file. If the error persists, try recovering the file using Excel's built-in repair features.

Safe Mode:

Launch Excel in Safe Mode to identify if the problem is related to a specific add-in or configuration. This can help you isolate the issue and take appropriate action.

Memory Management:

Insufficient system memory can cause [Excel errors](#). Close unnecessary applications to free up RAM. If the error persists, consider upgrading your system's memory.

Check System Requirements:

Verify that your computer meets the minimum system requirements for running Excel. Inadequate hardware specifications can lead to performance issues and errors.

Anti-virus Interference:

Some antivirus programs may interfere with Excel's normal operations. Temporarily disable your antivirus software and check if the error persists. If it does, consider adjusting your antivirus settings.

Reinstallation:

If all else fails, consider reinstalling Microsoft Excel. This can resolve issues related to corrupted [program files](#). Ensure you have a backup of your important files before proceeding with reinstallation.

Microsoft Support:

If the error persists despite your efforts, seek assistance from [Microsoft Support](#). Visit the official Microsoft support website or community forums to find solutions or receive guidance from experienced users.

Backup and Recovery:

Regularly backup your Excel files to prevent data loss in the event of errors or system issues. Utilize cloud storage or external devices for secure data backup.

Conclusion:

By following these [troubleshooting](#) tips, you can effectively address the “Excel has run into an error” message and resume your work with confidence. Remember to stay proactive with software updates and system maintenance to minimize the occurrence of such errors in the future.

[Click here to visit our tech expert to clear your problem Chat with us for more Technical Support.](#)